



## 2 - CHARGE

Ensure your device is fully charged. The battery icon will flash green when charging is complete.



## 1 - PLUG IN

Plug the USB cable into your PC or USB wall charger.

## 3 - DOWNLOAD

Download the BreatheLITE software onto your PC or laptop.

Head to: [www.trolex.com](http://www.trolex.com)



## 4 - CONNECT

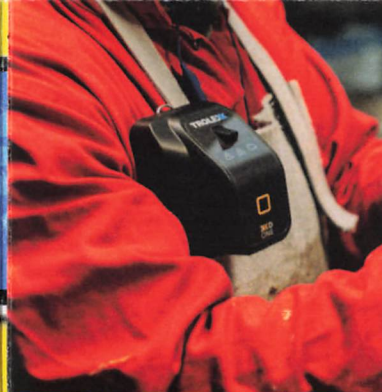
Connect your XD One to a PC or laptop using the USB cable to set custom parameters as required.

BreatheLITE will automatically identify each device connected.



## 6 - SWITCH ON

Press, hold and release when all three icons turn white.



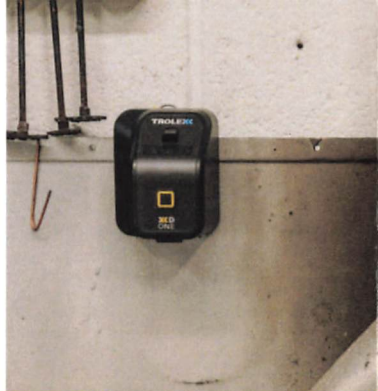
## 5 - MOUNT

Position your XD One as required. Personal, wall, pole, in-cab, stand alone, you decide.



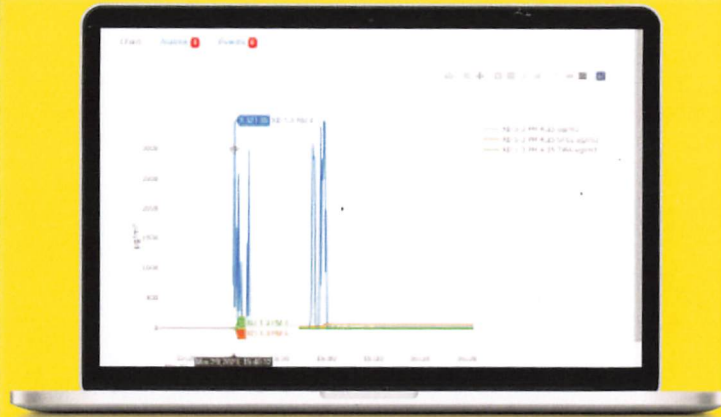
7 -  
SAMPLE

You are now monitoring  
particulate concentrations in  
your environment.



9 -  
REVIEW

Connect to BreatheLITE via  
USB to review, analyse and  
download device data.



8 -  
CAPTURE &  
ALERT

Record exposure data and  
receive automated real  
time alerts when particulate  
thresholds are breached.



STEL



TWA

# XKD ONE

QUICK START GUIDE

For more help visit - [www.trolex.com](http://www.trolex.com)